

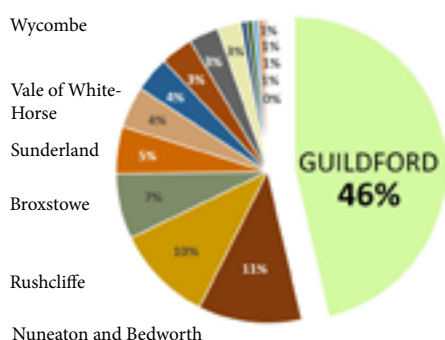
# Saving Guildford

GUILDFORD GREENBELT GROUP

*"GGG strives to protect our environment and our heritage, build homes of the right kind in the right places, give local businesses reasonable scope for growth, without aggressive expansion, and ensure that the countryside, which makes our area so precious and distinctive, is not casually destroyed."*

## Would you believe it?

- Between 2019-2020, nearly half (46%) of the green belt lost in England through adopted local plans was in Guildford. According to the Ministry of Housing, Communities and Local Government statistics, Guildford lost 1,470 hectares of green belt. The second biggest loss was in Nuneaton and Bedworth, which lost 350 hectares.



Percentage of England's lost Greenbelt  
(Local Plans approved 2019 to 2020)

- According to the INRIX 2016 Traffic Scorecard, Guildford is the town with the worst traffic congestion in the UK, and its traffic congestion is worse than many major cities, such as Glasgow, Cardiff, Liverpool, Bristol, and Southampton, making it the sixth most-congested hotspot in the UK.

- Between 2001-2011, the Office for National Statistics reclassified Guildford as part of the Greater London Built Up Area, along with Harlow, Bracknell and St Albans.
- The public consultation on the Regulation 19 version of the Local Plan resulted in more than 30,000 comments of objection. Despite this widespread opposition, the Tory-led Council pushed ahead with a Plan which was broadly similar (albeit with the removal of the Normandy strategic site).
- In planning its housing strategy, Guildford Borough Council (GBC) did not take into account the borough's traffic problems, nor its landscape constraints (89% of the borough was green belt and 64% is an Area of Outstanding Natural Beauty). The neighbouring borough of Woking successfully reduced its objectively assessed housing need by 50% as a result of these constraints, and yet it has a lower percentage of green belt (60%) and no AONB. Woking is also less congested. It would appear that GBC's decision to apply zero constraints was driven by the former Lead Councillor's wish to maintain higher housing figures, as evidenced in his statement to the GBC Meeting on May 15, 2017:

*"I'll take the objectively assessed need as it is at 12,426, but I can tell you I'm not going to celebrate the fact that the number has come down."*  
(Cllr Paul Spooner (Conservative Party), GBC Meeting, May 15 2017)

GGG is the only party pushing to have these legitimate constraints applied to Guildford's already inflated housing need figure.



**GUILDFORD  
GREENBELT  
GROUP**

## Message from GGG Leader – Ramsey Nagaty



I'm pleased to be launching GGG's newsletter. The reason for publishing it ahead of the Surrey County Council and Send by-elections on May 6 is to introduce readers to our two candidates: Julia Osborn, who is standing for the Shere Division in the SCC election, and Guida Esteves, who is standing in Send. We are very proud to have them on board.

The newsletter also aims to give you an insight into what GGG members have achieved both within GBC and on a national level, and to update you on two of Guildford's strategic sites: Blackwell Farm and Three Farms Meadows (the former Wisley airfield).

However GGG's biggest challenges are, and will continue to be: 1) protecting the countryside and ensuring that development is directed to urban brownfield sites; and 2) ensuring that funding for road infrastructure is focused on reducing existing congestion on the network, rather than simply facilitating yet more housing development, which over time will pile more cars onto our roads.

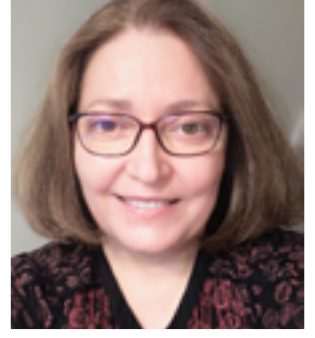
The shocking statistics that Guildford is the UK's most congested town and that in 2019-2020, Guildford's loss of green belt represented almost half the green belt lost across the whole country clearly demonstrates that GGG needs a stronger voice at both borough and county council levels.



# GUIDA ESTEVES

YOUR GGG CANDIDATE  
FOR GUILDFORD BOROUGH  
COUNCIL SEND WARD

*"Once lost, the green belt cannot be recovered. Sustainability has got to be put at the heart of local authority planning"*



Cllr Guida Esteves

Guida moved to Send in 2012 and is proud to have served as a parish councillor since 2015. As Chair of the Planning Committee, she steered the Send Neighbourhood Plan successfully to a local referendum, which will take place on 6 May (the same date as the elections).

She comments: *"I'm keen to contribute to my community as a borough councillor. It's sad that this by-election is due to the passing of Patrick Sheard, and I want to honour his memory by continuing all the hard work he did on behalf of Send."*

*"The COVID crisis is certain to result in long-term changes to how and where people live and work. Homes and workplaces are built for the long-term, so planned development must be adaptable to changing needs. It should be built only once the supporting infrastructure is in place and must include:*

- *low-cost homes,*
- *high-speed broadband as standard,*
- *layouts and space to support home working, regardless of size,*
- *renewable energy generation,*
- *electric vehicle charging points,*
- *space for recycling,*
- *easy access to local education, and*
- *flexible working facilities, community shops and green spaces."*

Guida says: *"I'm standing for the GGG because it's the party that not only*

## Patrick Sheard

Send sadly lost a hard-working and well-regarded GBC Councillor with the sudden death of Patrick Sheard last summer. This has caused the by-election in Send on 6th May 2021.



*champions our green belt, but also prioritises the development of brownfield sites before green spaces in villages, such as Send, which have had green belt protection arbitrarily removed. We have to promote sustainable development that will not negatively impact future generations."*



Cllr Susan Parker

Susan Parker, GGG Councillor for Send comments: *"I have built up a good relationship with Guida and Julia in their capacity as parish councillors over the past few years. They are bright, energetic and completely committed to the local area. They will make brilliant borough and county councillors and I hope that we will have the opportunity to work together."*



**GUILDFORD  
GREENBELT  
GROUP**

## **JULIA OSBORN**

### **YOUR GGG CANDIDATE FOR SURREY COUNTY COUNCIL SHERE DIVISION**

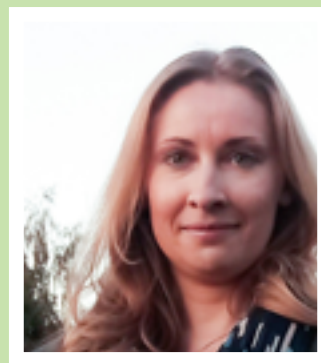
*"I love coming home to the tranquillity of our Surrey villages and want to see it preserved for future generations. This is my vision for Shere, Send, Tillingbourne, West Clandon and neighbouring villages."*

Julia lives in Send, where she grew up. She graduated from the University of London with a master's degree in Public Administration and has a background in public policy research.

A member of Send Parish Council since 2015, Julia was re-elected in 2019. She served on the Parish Planning Committee, was vice-chair of the Neighbourhood Plan and has a keen interest in highways and infrastructure. She is a member of Send Parish Council's Parking and Highways Working Group.

Along with GGG leader Ramsey Nagaty, Julia represents her parish on the Guildford Borough Council's Corporate Governance and Standards Committee, striving to improve the Council's record of local transparency and democracy.

Julia has a strong history of opposing the Guildford Local Plan, foisted on



Cllr Julia Osborn

residents by the previous Conservative borough council. She led the Save Send Action Group during the lengthy public inspection process, fighting alongside GGG councillor Susan Parker to stop over-development and to protect the green belt.

Julia says: *"I was active for several years in the Mole Valley Conservative Association, but like so many residents, I was appalled by the adoption of the Local Plan just one week before the last borough elections. Despite our MP's assurances, the Secretary of State failed to intervene. The Plan is full of flaws and is simply not what the residents of Shere, Send and Tillingbourne want. Now is the time for a rethink."*

*"I want to see our countryside protected and our villages remain as villages. It's clear to me that GGG is the party that is true to this cause."*



**VOTE GGG**



[guildfordgreenbeltgroup.co.uk](http://guildfordgreenbeltgroup.co.uk)



*“the bulldozers are coming unless  
you vote now to stop them” as  
planned here at Blackwell Farm*





# VOTE FOR GUILDFORD GREENBELT GROUP (GGG)

Your independent, multi-issue party, championing residents and the local environment.

Are you going to vote on 6<sup>th</sup> May? Or will you let the same old politicians run your Council?

- Many of your neighbours will be making their voices heard for sensible change. You can too.
- Since 2015, GGG has been consistent in its opposition to the Guildford Borough Council Local Plan.

We say:

## Vote local - Kick national politics out of local government!

GGG are local people, putting local issues first. We have three borough councillors and are fielding two new candidates in May for borough and county council seats. We believe in the need for a stronger local voice, standing up to big-party bullying and diktats from Whitehall. Our councillors lead by hard work and example – seizing the moral high ground in council debates, punching above their weight in council committees and making a real difference in the frustrating world of local politics.

GGG wants local authorities to be more open and collaborative, championing transparency, integrity, real choice, and open, joined-up ways of operating. We are committed to working with others, such as parishes, volunteers and residents' groups, to promote what's best for our local area rather than our own political careers. We are convinced that councils can be different – more open and responsive – if only voters dare to take a punt on a fresh approach.

## Stop Conservative councillors wrecking the green belt!

For too long, the Tories have ruled Surrey as if by Divine Right. In 2019, they finally lost their majority on Guildford Council. In 2021, we can make the same

happen on Surrey County Council. Long-term, one-party rule is never healthy. Surrey needs a council for residents, not property developers and their puppet politicians. GGG pledges to work to meet real local need, rather than developer greed, always putting public interest above private profit.

## Save our countryside, regenerate our towns!

GGG believes the one depends on the other. Only by preserving the green belt, our children's birth right, will developers be persuaded to invest in reviving our urban areas, where most people – especially young, working people – want to live. After COVID, our towns are more run down than ever. We need to build back a greener Guildford, creating a sustainable future for our communities.

GGG is committed to protecting the things you love from the impact of the climate emergency. Our councillors have

- consistently defended the green spaces cherished by residents
- spearheaded the local response to climate change, campaigning to put an end to traffic gridlock and foul air
- constantly urged that biodiversity, wildlife and tree preservation be given proper weight in planning matters
- campaigned and stopped some developments, speaking up for Areas of Outstanding Natural Beauty and the green belt and pressing for enforced protection of Wanborough Fields
- acted to resolve residents' concerns about planning applications, social housing, council tax, noise and disturbance and refuse disposal.

We believe passionately in progress. That means putting sustainable communities and modern, human-scale living above old-fashioned growth-at-all-costs. The countryside is not just empty space waiting to be built on. We need to value nature hugely as a common asset – not just for profit. Local planning urgently needs to catch up with what science is now telling us about this.

## Guildford Local Plan 2015–2034: fix the flaws!

Scandalously forced through Guildford Council just days before the Tories lost their borough majority in 2019, the Local Plan is deeply flawed. It takes no account of latest population data, migration trends, Brexit, the post-COVID economy

or the Government's levelling-up agenda for poorer regions. Its housing targets are inflated, many villages have lost their green belt protection, and there is still no plan for Guildford town centre. Over-development is already starting to ruin our countryside.

This juggernaut can still be stopped. GGG strongly supports the need to build the right homes in the right places, including more genuinely low-cost, urban homes for local people, not fake 'affordable' ones.

First, however, the required five-year review of the Local Plan needs to start without delay. House-building numbers should be brought into line with the true data and site allocations rethought. Surrey and Guildford councils should start doing their statutory duty by applying reasonable constraints to resist green belt development except in truly exceptional circumstances. Brownfield sites should be developed first, greenfield last.

The Local Plan is only a plan; the battle for how it is applied, and for our borough's future, has only just started. But make no mistake – the bulldozers are coming unless you vote now to stop them.

## VOTE FOR JULIA OSBORN – SURREY COUNTY COUNCIL (SHERE DIVISION)

## VOTE FOR GUIDA ESTEVES – GUILDFORD BOROUGH COUNCIL (SEND WARD)



## VOTE GGG ON 6TH MAY



# Is it bye bye Blackwell?

In Aldous Huxley's dystopian novel *Brave New World*, he envisions a built-up Guildford ("the seven towers of Guildford"), but the Hog's Back remains unspoiled. Even amidst his worst imaginings, Huxley sees the Hog's Back as sacrosanct – a rural idyll and an escape from the horrors of a totalitarian world. However, in the Brave New World being created by Guildford Borough Council, there will be towers in Guildford (a 13-storey tower block is proposed for North Street) **and** the ruination of the Hog's Back.

The proposed large-scale development at Blackwell Farm at the foot of the Hog's Back will change forever the vista from the ridge; and its two-lane access road, carving through the northern slope, will change its very topography. GGG, Save Hogs Back and the surrounding parish councils have consistently opposed this housing estate and highlighted the practical difficulties of delivering it.

Unfortunately for the landowner (the University of Surrey) and those promoting the development (but fortunately for the preservation of this important landscape), these practical difficulties have not been resolved:

- The A3 widening, on which the site depends, has been removed from the Government's Road Investment Strategy, and in the current economic climate it is unlikely to be reinstated. Without this key piece of infrastructure, there is no realistic prospect that Blackwell Farm could be delivered.
- It is not clear how access to the site will be achieved from either the south (A31) or from the north (Gill Avenue/Egerton Road):
  - The southern access – already a bottleneck – will require a junction on the Hog's Back that cannot be built to government standards at its proposed location. Instead, it would require an illuminated roundabout further

west on the Hogs Back, which the Council has stated is unacceptable in terms of landscape harm. No junction with the A31 means no access road, which means no Blackwell Farm development.

- Increased traffic at the northern access will create a breakdown at the Tesco roundabout, causing further chaos for those working at the Research Park and for ambulances trying to access the Hospital's A&E unit. The Tesco roundabout would break down even if the A3 is widened and even if the University's bonkers idea of 'controlling' who can and cannot use the entire access road were to be implemented.

With all these obstacles, it is no surprise that developers are not rushing to buy the land and it's all quiet on the western front. No doubt behind the scenes, conversations are taking place and GBC officers are scratching their heads to find ways to make the site work. They will be scratching them for some time – decades perhaps. The pity is that while all this head scratching is going on, Guildford is missing out on the opportunity to preserve this landscape for future generations. The boundary review for the Surrey Hills Area of Outstanding Natural Beauty (AONB) is imminent, and Blackwell Farm should have been put forward as a candidate area – it was assessed by an independent landscape architect as meriting AONB status in 2016. Unfortunately, the Government will not allow any land that has been earmarked for development within an adopted local plan to be included in the AONB review.

This is the first time that the Surrey Hills AONB has been reviewed in 60 years, and it may be another 60 years before it is reviewed again – by which time the outstandingly beautiful landscape of Blackwell Farm will have been replaced with a sea of tarmac and concrete.

by Karen Stevens.



GUILDFORD  
GREENBELT  
GROUP

*“development at Blackwell Farm at the foot of the Hog’s Back will change forever the vista from the ridge; and its two-lane access road, carving through the northern slope, will change its very topography”*





# Three Farms Meadows – Wisley

Taylor Wimpey purchased most of the land allocated at Three Farms Meadows (the former Wisley airfield) shortly after the conclusion of the unsuccessful judicial review of the Guildford Local Plan. It is clear to local campaigners and local councillors that the lack of sustainability of the site continues to be a problem for the new owner.

The allocation is largely similar to the one turned down at appeal by the Secretary of State. The site's removal from the green belt by the Tory-led Local Plan is the sole reason for refusal that has, so far, been addressed. All other reasons for refusing planning permission for an isolated new town in the countryside remain. If anything, the final version of the Junction 10 scheme, has made the traffic situation

worse – funnelling all visitors to the Royal Horticultural Society's principal garden at Wisley through the Ockham Park roundabout.

The Secretary of State has already determined that an Environmental Impact Assessment is needed to create the groundwork for a SANG (Suitable Alternative Natural Greenspace), which, if approved, would result in the loss of 17.5ha of Best and Most Versatile agricultural land. Residents are unhappy with Taylor Wimpey's piecemeal approach in splitting the site, allegedly to ensure that the SANG is ready before the first houses are occupied.

The allocation is adjacent to the Thames Basin Heaths Special Protection Area (TBHSPA), and this presents several ecological and environmental obstacles. The cumulative impact on the fragile habitats, which are protected on the TBHSPA, needs to be considered, and this impact has yet to be evaluated properly.

Residents believe that the SANG enabling application and the application for the creation of a roundabout in a field are wholly premature, and should be put back at least until the Secretary of State has determined the Development Consent Order for Junction 10, which has been delayed until May 2021.

The controversial Local Plan, adopted by the previous administration immediately prior to the election, now needs to be reviewed. The infrastructure upgrades to the A3 in Guildford, which are no longer on the horizon, and the availability of more sustainable sites in the town due to the collapse of retail mean that a Local Plan review urgently needs to be undertaken so that the allocation of unsustainable sites in the countryside can be reconsidered.

by Helen Jefferies



GUILDFORD  
GREENBELT  
GROUP






*“The cumulative impact on the fragile habitats, which are protected on the Thames Basin Heath Special Protection Area, needs to be considered”*







*“the bulldozers are coming unless  
you vote now to stop them” as  
planned here at Wisley*

## Challenging Guildford's Local Plan

In 2019, on behalf of GGG, I launched a legal challenge of the Guildford Local Plan. This was one of three judicial reviews (JRs), which were heard simultaneously. The other two challenges came from Compton and Ockham parish councils.

Initially, I appealed to residents of the villages as well as the parish councils affected by the removal of green belt status for funds to pay for the required legal services.

Residents and two parish councils – West Horsley and Send – were extremely generous, and we raised sufficient funds (just shy of £40,000) to cover the legal costs. This demonstrated the enormous weight of opposition to the Local Plan.

The case was heard in the High Court in November 2019. Unfortunately, my barrister could not be available for those dates, and the Judge refused to change the dates. I was therefore represented by the barrister representing Ockham Parish Council. He obviously did not have time to master the brief of my JR, so I was left poorly represented, due to the intransigence of the Judge.

In opposition to our joint challenge were: Wisley Property Investments Ltd, Blackwell Park Ltd, Martin Grant Homes Ltd, Catesby Estates Ltd, Guildford Borough Council, and the Secretary of State for Housing. Obviously, the developers had a massive vested interest in the proceedings, given the enormous profits they stood to gain from the Local Plan, and they hired the top barristers to represent them.

The key points of my challenge were the removal of the villages from the green belt, and the massively inflated housing ‘need’ figures.

In the event, the Judge did not appear to be particularly impartial, and allowed himself to be swayed by the opposition's barristers, particularly on the argument that the Council had to have a “number plus” as a buffer against any sites being undeliverable. He came back with a judgement, which was to deny all the arguments put forward by all three claimants.

Although the JR was a hard slog and rather stressful, given the personal financial risk I was running, I don't regret having a go, and I would do it again. The Local Plan, with such a high ‘housing need’ and the removal of the green belt from so many villages, was unjust and plain wrong, and remains so today.

by Jules Cranwell



GUILDFORD  
GREENBELT  
GROUP



# Local Plan Part two – Development Management Policies



Cllr Catherine Young

As everyone is painfully aware, the Tory-led Local Plan was controversially pushed through just before the elections in April 2019. The adopted Local Plan: Strategy and Sites (LPSS) identified Guildford's housing, employment, retail and traveller needs, and allocated sites to meet these needs. Devastatingly, in doing so, it removed a significant number of villages from the green belt and allocated four strategic sites across the borough.

To support the strategic policies within Part One, the Council is now preparing the second part of the Local Plan, which will provide a suite of more detailed development management policies. These will range from policies addressing climate change, biodiversity, air quality, heritage, infrastructure and housing (eg design and density).

The 'preferred options' for these policies went through a Regulation 18 consultation last summer, which resulted in the submission of 1,313 comments from 89 individuals and organisations. GGG responded to this consultation, working alongside R4GV.

Following the consultation, a Local Plan Panel was formed in October 2020 to review GBC's draft policies. The panel comprises: Jan Howard (Lib Dem), Lead Councillor for Planning Policy, and the

Planning Policy Team, as well as the main Political Group Leaders. Catherine Young (Ward Councillor for Clandon and Horsley) was invited to join the Panel to represent GGG. Catherine sums up the process to date:

"This has been no small task, and at times it has been incredibly frustrating. There have been opportunities for the policy team to take a different view on some of the proposed policies and to strengthen those where necessary and to take a few risks on others to afford the

greatest level of protection. However, these opportunities have not always been taken. Throughout all the weekly meetings – and we have just finished number 15 – I have tried to ensure that the policies proposed were effective, robust and 'fit for purpose' and not open to interpretation. This is a fundamental aspect of the NPPE, which requires plans and policies to be clearly written and unambiguous. We await the draft Regulation 19, due later this summer, to see how effective we have been in bringing about any change."

## GGG Scrutinises ONS housing projections

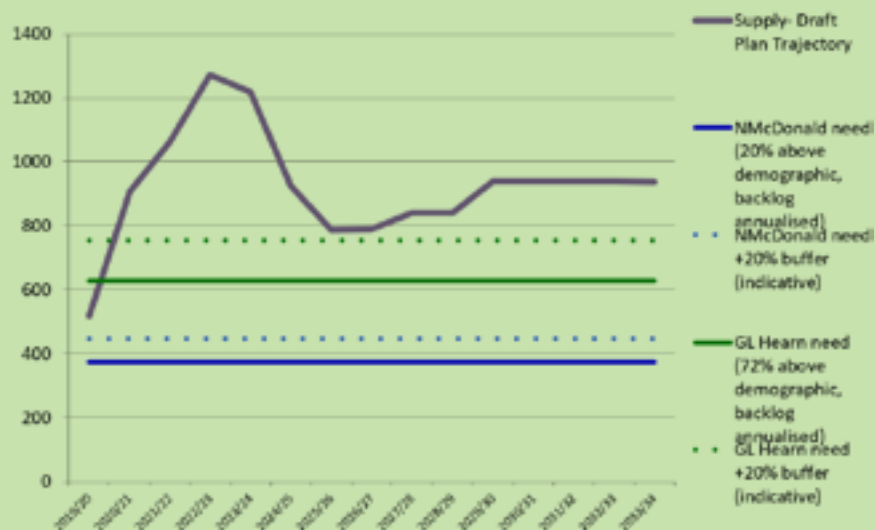
Former GGG Councillor David Reeve (Clandon and West Horseley) has been actively involved in the current national debate on the Office for National Statistics (ONS) population statistics and whether they provide a fair prediction of future expected population growth.

David Reeve has worked on this subject for many years and, with other GGG members (including Dr Peter Shaw), has challenged the ONS before. This work is important because the requirements for housing on green fields are based on the

ONS projections for future population growth. If the ONS predictions have overestimates built into them on a systematic basis (which GGG would argue), then the required housing numbers across the country may be too high, certainly in terms of the proposed types of housing that will be built.

This ongoing battle has now recently gained national coverage in both *the Guardian* and *The Times* newspapers, most commonly reported just as a direct challenge on the population forecasts for Coventry (since the current debate with the ONS has recently been led by campaigners based in Coventry), although it has reference to population forecasts for all of England and for Guildford in particular. David Reeve and others continue to be involved in direct discussions with the ONS in terms of the validity of their calculations.

### Guildford Housing- Supply Trajectory and Need



Guildford Residents Association graph demonstrating massively inflated housing supply in Guildford's Local Plan



*“It is no longer a case of tree-hugging nimbies versus hard-headed developers and their client politicians, but a battle between deluded, growth-at-any-cost fanatics and economic realists.”*

Deer in ancient woodland at Blackwell Farm – woodland that will be completely encircled by the University of Surrey’s business park and road network.





# PUTTING A PROPER VALUE ON NATURE IN LOCAL PLANNING

Our local natural environment provides us with all sorts of valuable products and services: food and mineral production; leisure and tourism amenities; water catchment and flood control; natural heritage and habitats for biodiversity; clean air and a carbon sink for greenhouse gases; room for public facilities such as sports fields, parks and burial grounds; film locations; natural landmarks and the inherent beauty of open views and sight lines; and big benefits to public health and wellbeing – mental as well as physical.

In a rational world, Guildford's natural capital would be valued every bit as much as new housing or industry and priced accordingly, but the world isn't rational. Our local planning system is a relic of the paternalistic 1940s, an age of 'planners know best', when the top priority was post-War economic reconstruction. Since then, so many layers of rules have been added that even the Prime Minister wants to 'tear it down and start again'. His solution, set out in the Government's [2020 planning white paper](#), is to split the whole country into three zones, for 'protection', 'renewal' and 'growth' respectively, with national house-building targets for each. This has already been trashed by councils as a Whitehall power-grab, and (like the 2012 [National Planning Policy Framework](#)) is likely to end up adding just another crusty layer to an already seized-up system.

Meanwhile, local planning remains stuck in the same old groove: a 'presumption in favour of growth', greenwashed at the edges with minor concessions to 'sustainable development'. A whole bloated industry – more like a priesthood – has grown up around planning, including part-time councillors and hard-pressed, generalist council officers, who are easily bamboozled by property developers and consultants, whose pockets sometimes appear bottomless. Nowadays, even minor planning applications run to thousands of technical pages, which as far as the public is concerned, might as well be written in Latin; a current application for housing at Manor Farm, West Horsley, runs to 229 documents. Common sense is no longer accepted as a valid planning criterion.

Worse still, the system is not symmetrical. In a cynical war of attrition, private developers can, with minor adjustments, resubmit applications indefinitely until they are approved, sometimes hiding their identity behind offshore trusts. These are the tactics used at Wisley 'Airfield'. The public, on the other hand, has almost no right of appeal against planning decisions; in the teeth of overwhelming public opposition, for instance, the hated [Guildford Local Plan](#) moved smoothly over six years from 'issues and options' to *fait accompli* – set in stone, supposedly, until 2035.

Can this systemic official contempt for nature be changed? In 2006, the British Government sponsored a startling report by Lord Stern that revolutionised global thinking about the economics of climate change. In February, a similar report appeared by Professor Sir Partha Dasgupta on the economics of biodiversity.

The [Dasgupta Review](#) is likely to frame the policy agenda for years to come. Its starting point is the accepted scientific view that, thanks to human activity, planet Earth is already well on its way to the sixth mass extinction of species, which this time, alas, is due to include us. The review sets out clearly why current economic models fail to factor in the true value of nature and how this might be corrected. Dasgupta insists on humanity's total dependence on biosphere limitations and looks at nature not as something to exploit, but as a quantifiable, investible asset, which can be categorised into different types of ecosystem services.

The review's vision is global, but has clear implications for local planning, supporting what GGG has been arguing for years: that council policy consistently fails to put a proper value on nature. Dasgupta emphasises the key role of local and voluntary action in protecting society's 'inclusive wealth' – the true, accounting value of natural, human and produced capital across the generations that adds up to what might equally be called 'wellbeing'. The review also supports local self-help – for instance community management of 'common pool resources', local ecosystems which can be categorised as neither purely private nor public property, but something in-between.

It will take years of effort to develop detailed methodologies around this and to bring our antiquated planning system into line, but in language that even local government and the property business can understand, Dasgupta effectively explodes the myth that destroying the countryside is the necessary price of progress. In the debate about planning the tables are turning. It is no longer a case of tree-hugging nimbies versus hard-headed developers and their client politicians, but a battle between deluded, growth-at-any-cost fanatics and economic realists. GGG is proud to belong to this second group.

by David Roberts







**GUILDFORD  
GREENBELT  
GROUP**

## We need your support

GGG is fielding two candidates. In Send, there is a Guildford Borough Council by-election to replace Patrick Sheard, who sadly died last year, and Guida Esteves will be our candidate. We are also contesting the Shere Division in the Surrey County Council Election, and Julia Osborn will be fighting for us.

We will shortly be sending you further details of both candidates, and we will then begin the task of distributing leaflets in Send and in the rest of the Shere Division

We need to keep up the fight, firstly to counter the worst effects of the Local Plan, and also to prevent more damage in the next Local Plan, which will be on the agenda soon.

We are all volunteers; we're an independent party, which is not funded by other organisations, so we rely on our members and supporters. Please consider whether you can support us this year.

### How you can help:

If you can deliver leaflets for a few streets, that would help a great deal. If you live along a main road in one of the electoral areas, perhaps you would consider allowing us to put a temporary placard on a pole in your garden? Please email Mike Hurdle ( [mike.hurdle@btinternet.com](mailto:mike.hurdle@btinternet.com) ) or telephone him on 01483 223255 for further information.

You may choose to make a donation. We have some funds, thanks to supporters' past generosity, but things are tight. To distribute leaflets in a village the size of Send is likely to cost nearly £400. Any sum would be welcome, however small. Payment may be made online: -

Account: Guildford Greenbelt Group Party

Sort Code: 20 35 35

Account number: 43198146

If you would like to make a donation, please leave your name as the 'Reference' Any kind of support would be greatly valued.

**Your independent,  
multi-issue party**

This newsletter is published in March 2021 by Guildford Greenbelt Group – party office: Hadlands, High Park Avenue, East Horsley, Surrey, KT24 5DB