

OPEN FORUM

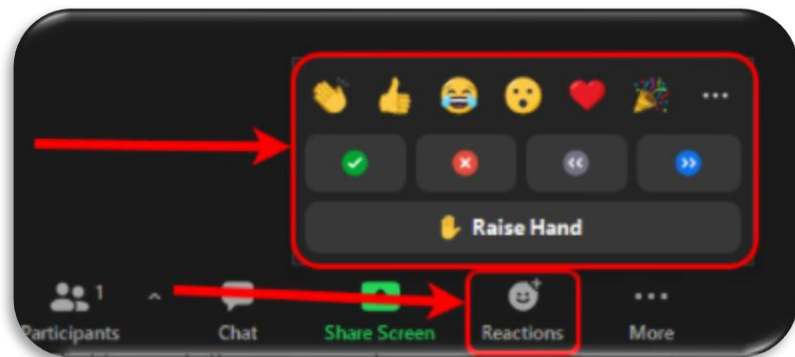
8 March 2022

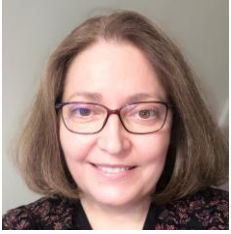


Welcome and Introduction

Cllr Catherine Young & Cllr Ramsey Nagaty

- ▶ The event will be recorded to ensure that we pick up, and answer, everyone's questions.
- ▶ You can use the **CHAT** function which will be monitored during the event for extra questions and comments.
- ▶ You will be automatically muted during the event, so please use the **RAISE HAND** feature if you wish to speak.





Becoming a New Councillor

Cllr Guida Esteves

- ▶ Joining GBC as a new councillor in May 2021
- ▶ 10 months on

 - Would I recommend becoming a councillor?

- ▶ Appointments
 - **Council - Member**
 - **Oversight & Scrutiny Committee - Member**
 - Planning Committee - Substitute
 - Joint Executive Advisory Board - Substitute
 - Service Delivery Executive Advisory Board - Substitute
 - Strategy and Resources Executive Advisory Board - Substitute
 - Corporate Governance & Standards Committee - Substitute
 - **North Downs Housing - Director**





A Typical Working Week

Cllr Catherine Young

Catherine is also a member of
West Horsley Parish Council

- ▶ Submitted GGG's response to the Local Plan Part Two Development Management Policies consultation (Regulation 18)
 - expressed concerns re infilling, irreplaceable habitats, heights and density
- ▶ Attended 'Shaping Guildford' Zoom session
 - submitted questions on congestion charging in the Town Centre & control of air pollution
- ▶ Held a fortnightly catch up with Chair of East Horsley Parish Council and discussed:
 - flooding implications of the Lollesworth Fields allocated site application
 - possible options for the future of the land at the old bowling green site
- ▶ Caught up on Teams with GBC's Head of Enforcement and reviewed:
 - situation on Long Reach re laying of hard core on open land and
 - activity at Newmarsh Farm
- ▶ Attended West Horsley Parish Council's monthly meeting, reporting on the local plan review and disruption to bin collections





A Typical Working Week

Cllr Catherine Young

- ▶ Completed a site visit to Manor Farm, West Horsley
 - Thakeham homes are about to commence site clearance for their approved 139 new homes
- ▶ Spoke at the Executive Meeting online in response to the 'Make Guildford Pesticide Free' petition
 - raised issue of the use of glyphosate to clear land for SANG use and how we could condition planning approvals to prevent this. Secured commitment from Leader to action
- ▶ Attended the 'Show The Love' February 'Green Heart' exhibition at Zero Guildford:
 - listened to presentations from teenagers on what part they were playing to combat Climate Change and what support they need from us
 - viewed the 2000 hearts completed by school children on display in the Friary Centre
- ▶ Reviewed the weekly plans list to identify any potential issues for follow up
- ▶ Reviewed the weekly highways list for any road closures to impact my Ward
- ▶ Responded to a resident's complaint concerning hygiene at The Spectrum

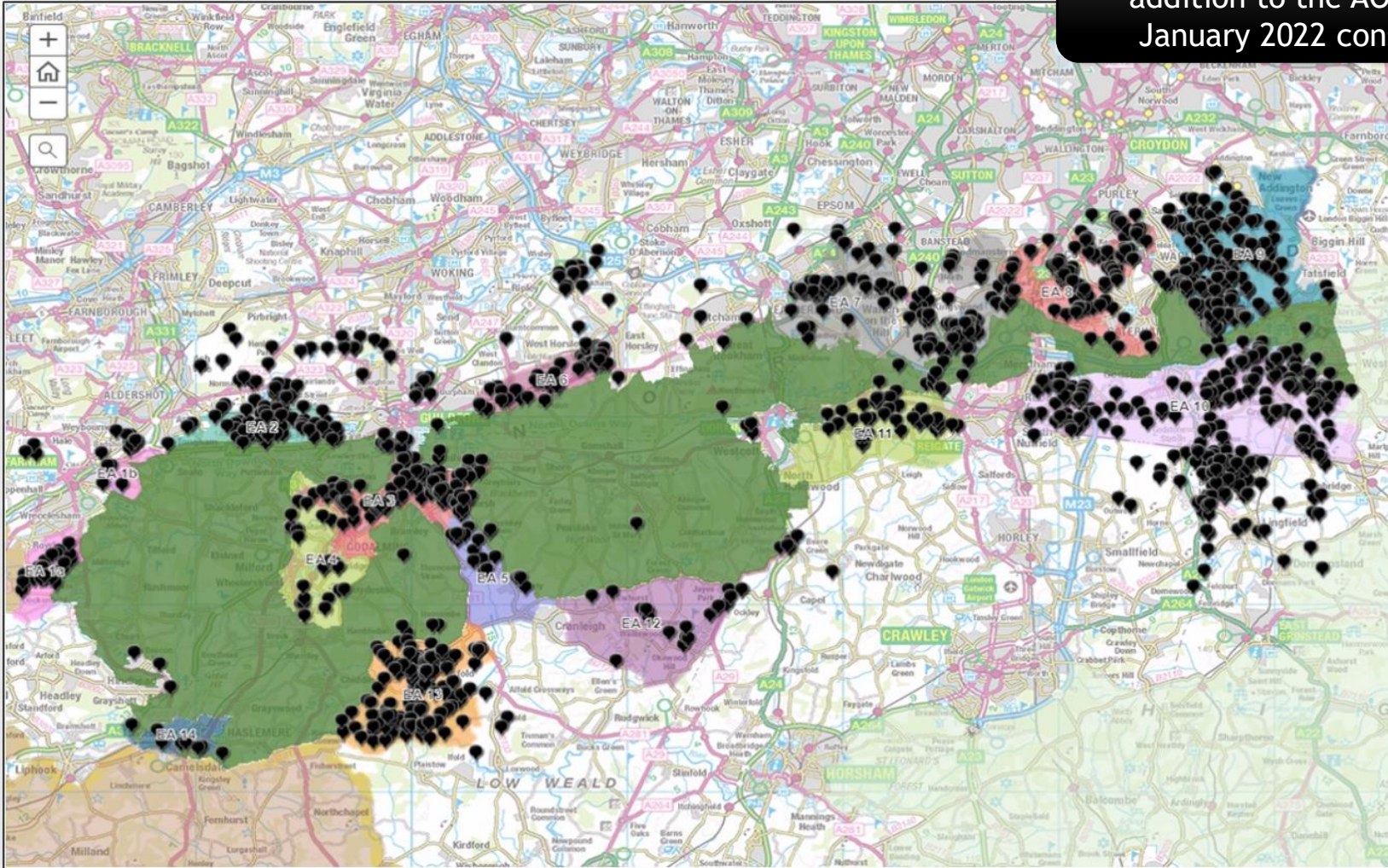




Proposed AONB Expansion

Cllr Susan Parker

Each dot represents a suggested addition to the AONB in the January 2022 consultation





Proposed AONB Expansion

Cllr Susan Parker

Following stakeholder engagement in January 2022, the next steps and indicative timescales for each are as follows:

May 2022	Do the candidate areas meet “natural beauty criterion” - Natural England (NE) technical assessment
June 2022	Should the qualifying areas be designated - NE to decide if “desirable”
Sept 2022	NE will propose revised boundaries
October 2022	Consultation between Natural England and the Area of Outstanding Natural Beauty (AONB) board - with involvement of some local officers (no formal consultation but it is possible that some comments may be submitted from e.g. parish councils to AONB)
November 2022	NE directors to give approval for statutory public consultation
By end March 2023	Statutory and public consultation
May 2023	Assessment of consultation
June 2023	Draft Order and approval of formal notice period
28 day notice period	Representations allowed on the draft Order - public can make representations
By August 2023	Submission to Secretary of State - signed and sealed
	Decision by Secretary of State





GBC Local Plan & Housing Numbers

Cllr Ramsey Nagaty



Calculations in early 2021 showed that GBC already had a supply of 16600

- ▶ GBC Local Plan (LP) was adopted in 2019 by the Conservative administration and covers 15 years to 2034
- ▶ LP housing requirement is 562 dwellings per year giving 8430 homes over 15 years
- ▶ LP requirement is actually 10678 dwellings with an identified possible supply of 14602 giving an additional buffer of 3924 dwellings (37%)
- ▶ The Inspector concluded this provided sufficient cover if there is slippage due to infrastructure delays (e.g. the A3 improvements not coming forward)

Question: how does 8430 get to 10678 ?

- ▶ 562 dwellings x 19 years = 10678
- ▶ Original plan start date was 2015 thus 19 years





GBC Local Plan & Housing Numbers

Cllr Ramsey Nagaty

Looking ahead:

- ▶ Government prescribed calculation going forward is called the “**Standard Method**” - using this would result in **778 dwellings per year**
- ▶ **Town Centre Master Plan** and additional town centre sites could result in a further **3500 homes**, above what is already in the adopted LP
- ▶ Office for Statistical Regulation (OSR) and the Office for National Statistics (ONS) **concluded the Guildford housing requirement figure was too high** partly due to:
 - the university student population being made up of 40% overseas students that mainly return home
 - the current birth rate of 1.36 which shows that Guildford’s population is actually declining

Instigated by
Ramsey and
GGG
supporters





GBC Local Plan & Housing Numbers

Cllr Ramsey Nagaty

- ▶ **Constraints must be applied** including Flooding, Traffic, Air Pollution, Greenbelt & AONB as well as other infrastructure limitations
- ▶ **Latest Census figures** are expected 2nd /3rd Quarter 2022 which should confirm the declining Guildford population
- ▶ **GGG believes the LP review should either:**
 - create a new plan which is not as car dependent as the existing one through review of the strategic sites, village developments; or
 - utilise the buffer to remove and/or reduce the size of strategic and village sites due to lack of infrastructure
- ▶ **GGG also wants the LP review to challenge the 2019 inseting and put the villages back in the Green Belt**



How to Keep in Touch

GGG Online

- ▶ www.guildfordgreenbeltgroup.co.uk
- ▶ www.guildfordgreenbeltgroup.co.uk/blog
- ▶ www.facebook.com/Guildfordgreenbelt

GGG Councillors at Guildford

- ▶ Ramsey.Nagaty@guildford.gov.uk
- ▶ Susan.Parker@guildford.gov.uk
- ▶ Catherine.Young@guildford.gov.uk
- ▶ Guida.Esteves@guildford.gov.uk

Feedback to

- ▶ ggg@guildfordgreenbeltgroup.co.uk



The image shows a screenshot of the Guildford Greenbelt Group (GGG) website. At the top left, it says "GGG - Guildford Greenbelt Group". On the top right is the GGG logo, which is a green circle with a white leaf and the text "GUILD FORD GREENBELT GROUP". Below the header is a navigation menu with links: Home, About us, Newsletters, Join GGG, Contact Us, News, Current Updates, and Useful Links. The main content area features a large photograph of a fox standing in a pond, surrounded by reeds. A text box overlaid on the image reads: "We are a local party that represents the countryside, wildlife, our ecosystem and the wider environment. . .". Below the image, the text "GGG membership basics:" is displayed in a large, bold font. Underneath, the membership rates are listed: "£15 per individual p.a." and "£20 per family p.a.", followed by "Renewal date 31 March each year." and "Donations welcomed!". At the bottom, it states "Our Membership Secretary is Mike Hurdle." and provides the email address "ggg@guildfordgreenbeltgroup.co.uk".





Q&A

